



Analysis of Student Satisfaction Survey Feedback Form (2020-21)

S. No.	Questions	B.B.A.	B.Com.	B.C.A.	B.Ed.	B.A. B.Ed.	B.Sc. Bio. tech.
1	How much of the syllabus was covered in the class?	4.46	4.46	3.16	4.19	4.45	4.37
2	How well did the teachers prepare for the classes?	4.46	4.47	3.32	4.52	4.45	4.11
3	How well were the teachers able to communicate?	4.53	4.47	3.30	4.33	4.52	4.53
4	The teacher's approach to teaching can best be described as	4.54	4.53	3.21	4.26	4.28	4.58
5	Fairness of the internal evaluation process by the teachers.	4.54	4.55	3.25	4.04	4.21	4.47
6	Was your performance in assignments discussed with you?	4.52	4.49	3.22	4.26	4.21	4.16
7	The institute takes active interest in promoting internship, student exchange, field visit opportunities for students.	4.51	4.53	3.13	4.26	4.41	4.32
8	The teaching and mentoring process in your institution facilitates you in cognitive, social and emotional growth.	4.41	4.42	3.26	4.41	4.59	4.26
9	The institution provides multiple opportunities to learn and grow.	4.54	4.54	3.27	4.26	4.48	4.16
10	Teachers inform you about your expected competencies, course outcomes and programme outcomes.	4.38	4.46	3.16	4.22	4.34	4.26
11	Your mentor does a necessary follow-up with an assigned task to you.	4.54	4.53	3.21	4.26	4.07	4.32
12	The teachers illustrate the concepts through examples and applications.	4.50	4.51	3.18	4.30	4.21	4.58
13	The teachers identify your strengths and encourage you with providing right level of challenges.	4.47	4.52	3.16	4.22	4.17	4.16
14	Teachers are able to identify your weaknesses and help you to overcome them.	4.51	4.54	3.28	4.19	4.140	4.37
15	The institution makes effort to engage students in the monitoring, review and continuous quality improvement of the teaching learning process	4.59	4.55	3.19	4.15	4.34	4.42

(Signature)





16	The institute/ teachers use student centric methods, such as experiential learning, participative learning and problem-solving methodologies for enhancing learning experiences.	4.53	4.46	3.29	4.11	4.24	4.32
17	Teachers encourage you to participate in extracurricular activities.	4.49	4.48	3.32	4.11	4.07	4.47
18	Efforts are made by the institute/ teachers to inculcate soft skills, life skills and employability skills to make you ready for the world of work.	4.49	4.51	3.30	4.44	4.48	4.32
19	What percentage of teachers use ICT tools such as LCD projector, Multimedia, etc. while teaching?	4.52	4.51	3.22	4.44	4.52	4.11
20	The overall quality of teaching-learning process in your institute is very good.	4.50	4.58	3.20	4.44	4.41	4.37

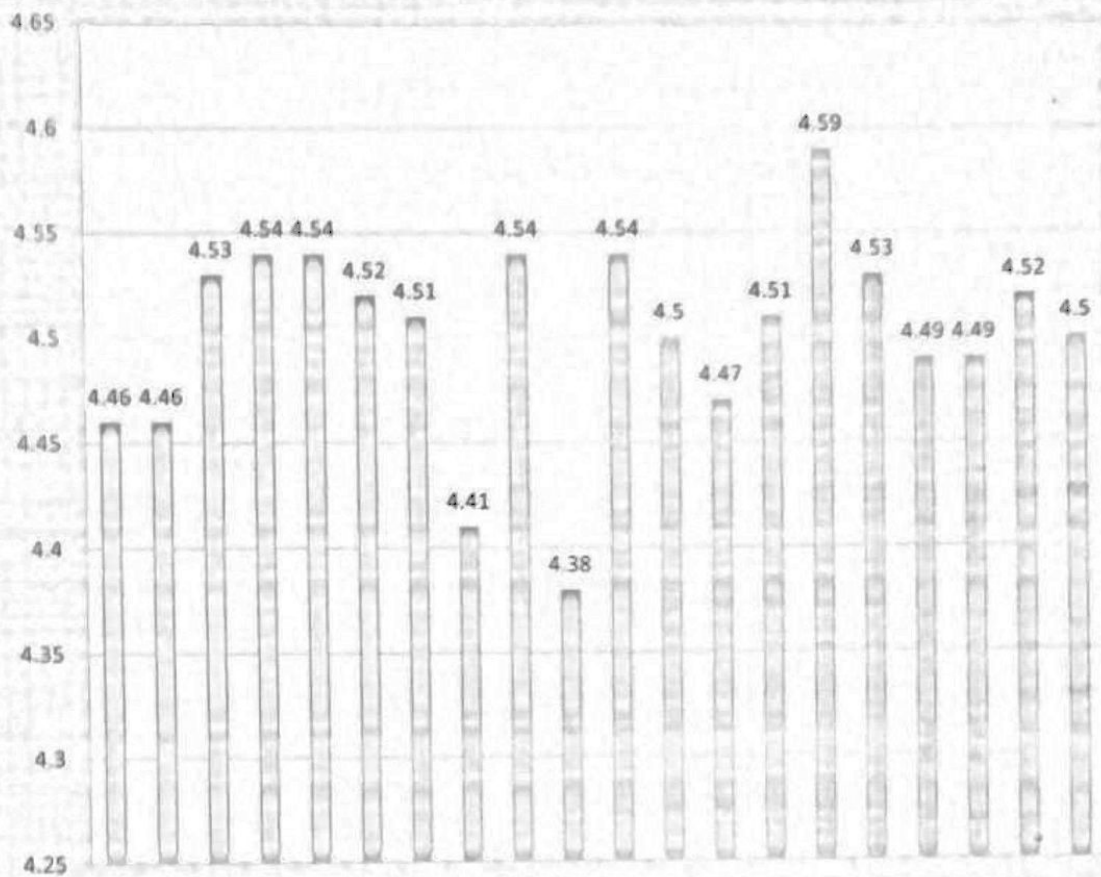
[Handwritten signature]





**BBA
Feedback
Analysis
(2020-21)**

Responses
(Rating
Scale from
1 to 5)



- The students possess strong technical knowledge/skill.
- How well did the teachers prepare for the classes?
- How well were the teachers able to communicate?
- The teacher's approach to teaching can best be described as
- Fairness of the internal evaluation process by the teachers.
- Was your performance in assignments discussed with you?
- The institution facilitates you in cognitive, social and emotional growth.
- Your mentor does a necessary follow-up with an assigned task to you.
- The teachers identify your strengths and encourage you with providing examples and applications.
- Teachers are able to identify your weaknesses and help you to overcome them.
- The institution makes effort to engage students in the monitoring, review and continuous quality improvement of the teaching-learning process.
- The teaching and mentoring process in your institution
- Teachers inform you about your expected competencies, course outcomes and programme outcomes.
- The teachers identify your strengths and encourage you with providing right level of challenges.
- Teachers encourage you to participate in problem-solving methodologies
- The institute makes effort to engage students in the monitoring, review and continuous quality improvement of the teaching-learning process.
- The teaching and mentoring process in your institution
- Teachers encourage you to participate in extracurricular activities.
- The institute makes effort to engage students in the monitoring, review and continuous quality improvement of the teaching-learning process.
- The teaching and mentoring process in your institution is very good.

Parameters

[Handwritten signature]



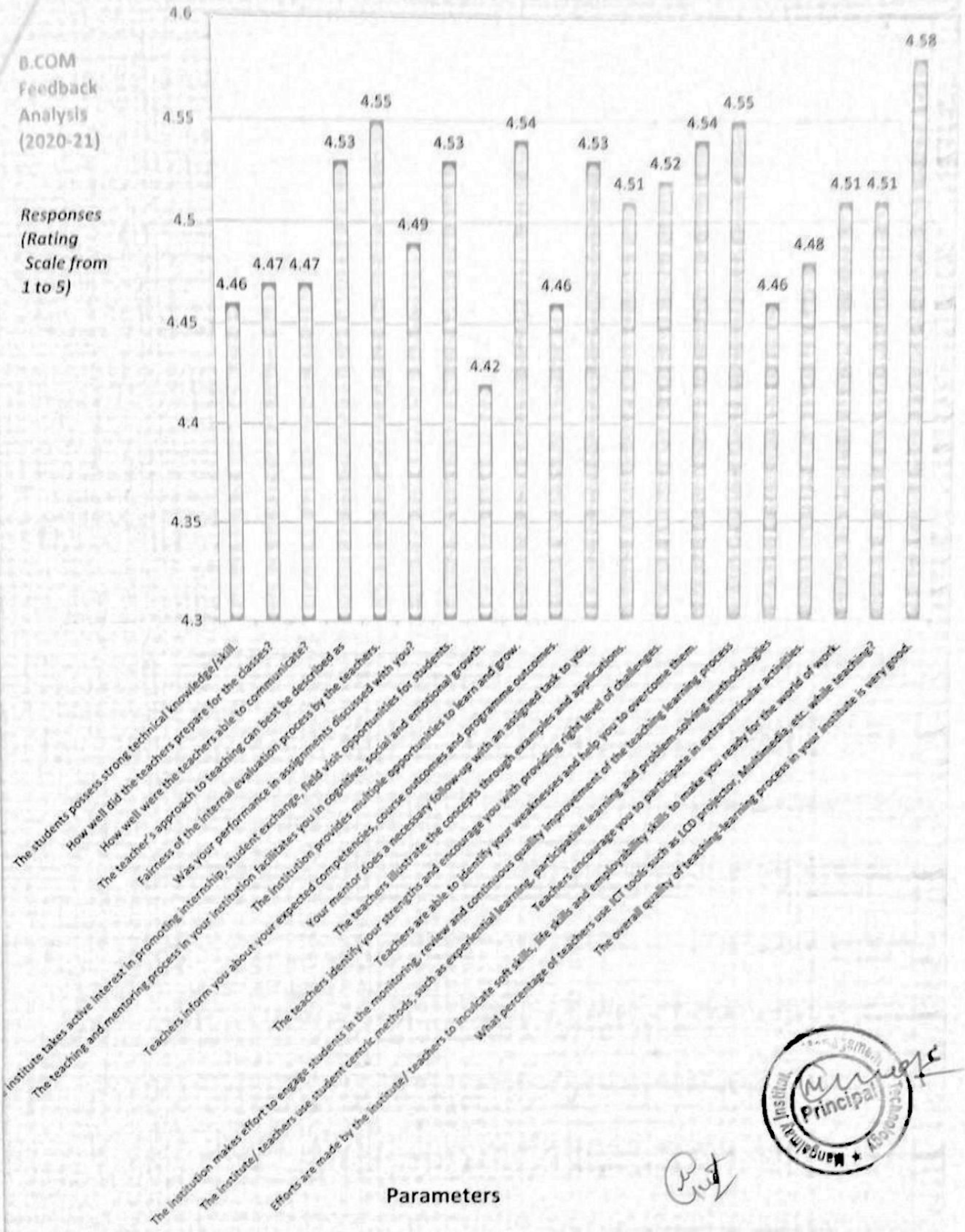


Mangalmay Institute of Management Technology Greater Noida (U.P.)



**B.COM
Feedback
Analysis
(2020-21)**

*Responses
(Rating
Scale from
1 to 5)*



Parameters

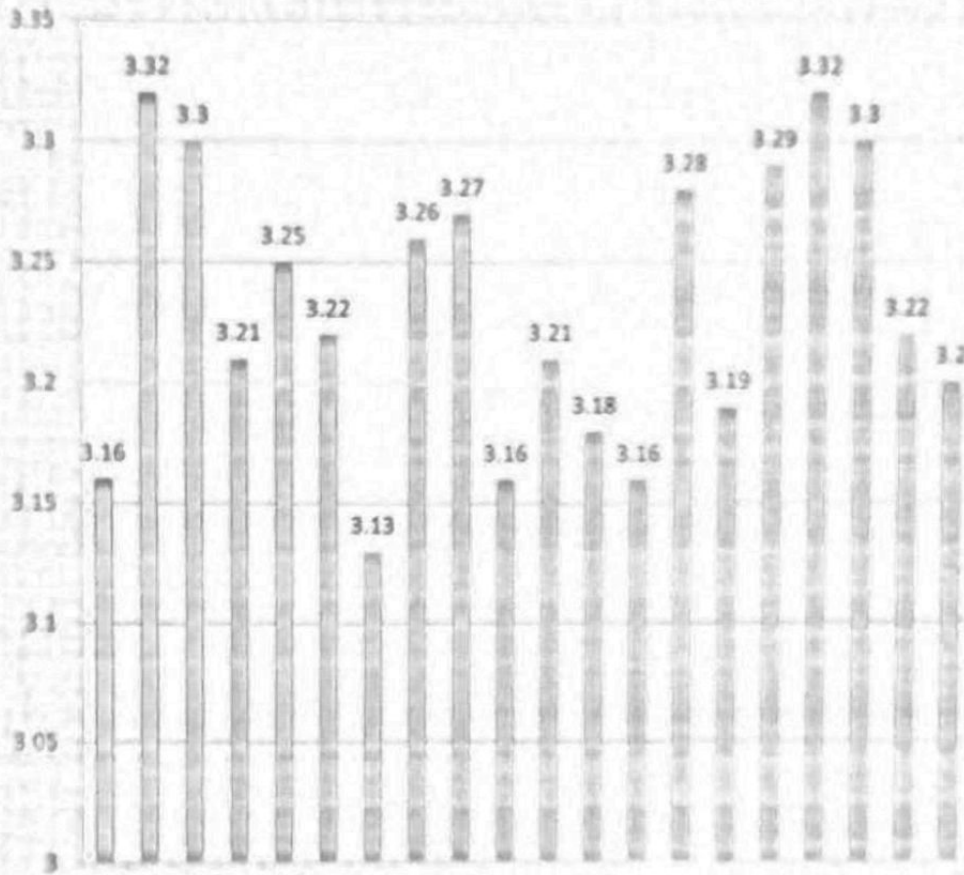
Put





BCA
Feedback
Analysis
(2020-21)

Responses
(Rating
Scale from
1 to 5)

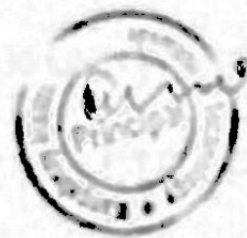


BCA

1. The subject matter (core technical knowledge) is
 2. How well all the teachers present for the classes
 3. How well were the teachers able to communicate?
 4. The teacher's approach to teaching can best be described as
 5. Examples of the student evaluation process by the teachers
 6. Do the other performance evaluation processes discussed with you?
 7. The institution provides multiple opportunities for students
 8. Your opinion on a necessary follow-up with an assigned task to you
 9. Teachers are able to identify your weaknesses and help you to overcome them
 10. The institution provides multiple opportunities to learn and grow
 11. Your opinion on a necessary follow-up with an assigned task to you
 12. Teachers are able to identify your weaknesses and help you to overcome them
 13. The institution provides multiple opportunities to learn and grow
 14. Your opinion on a necessary follow-up with an assigned task to you
 15. Teachers are able to identify your weaknesses and help you to overcome them
 16. The institution provides multiple opportunities to learn and grow
 17. Your opinion on a necessary follow-up with an assigned task to you
 18. Teachers are able to identify your weaknesses and help you to overcome them
 19. The institution provides multiple opportunities to learn and grow
 20. Your opinion on a necessary follow-up with an assigned task to you

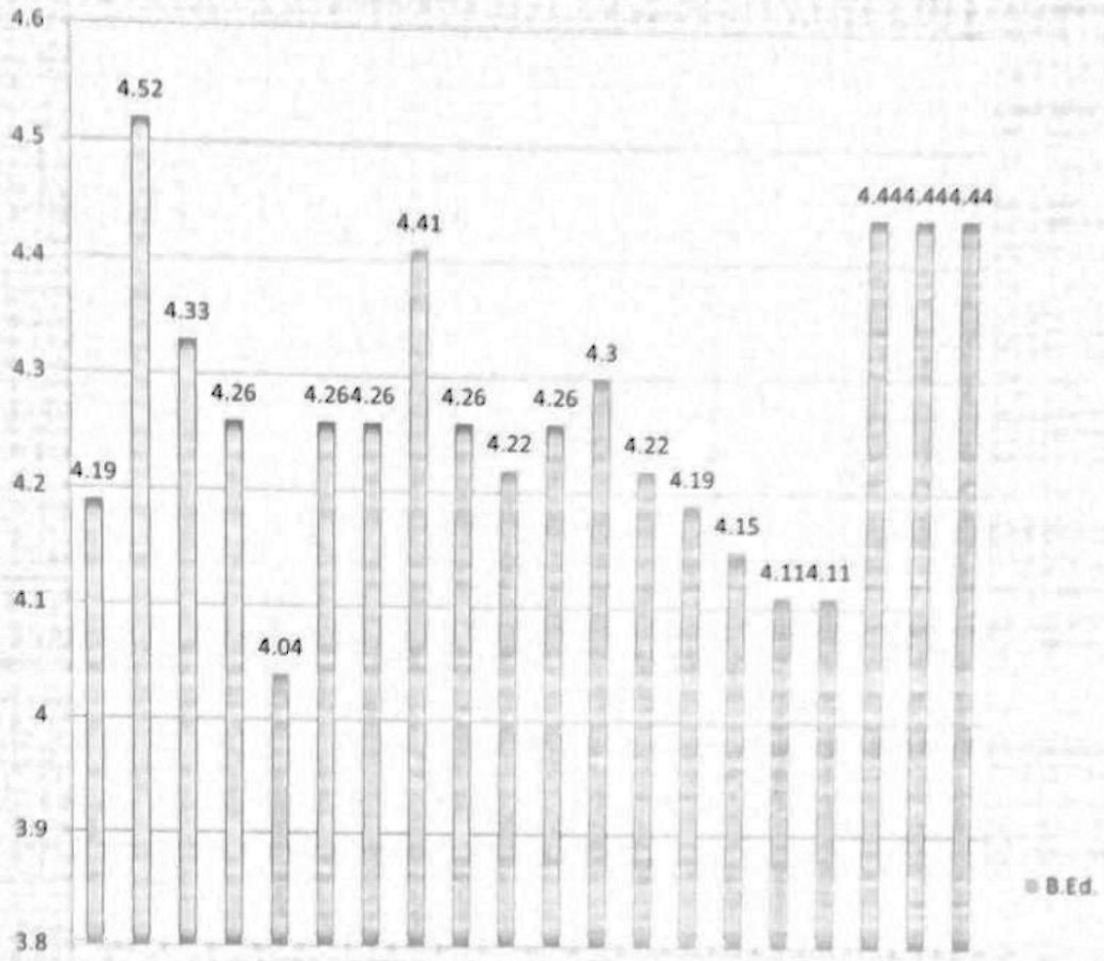
Parameters

Prin



B.Ed
Feedback
Analysis
(2020-21)

Responses
(Rating
Scale from
1 to 5)

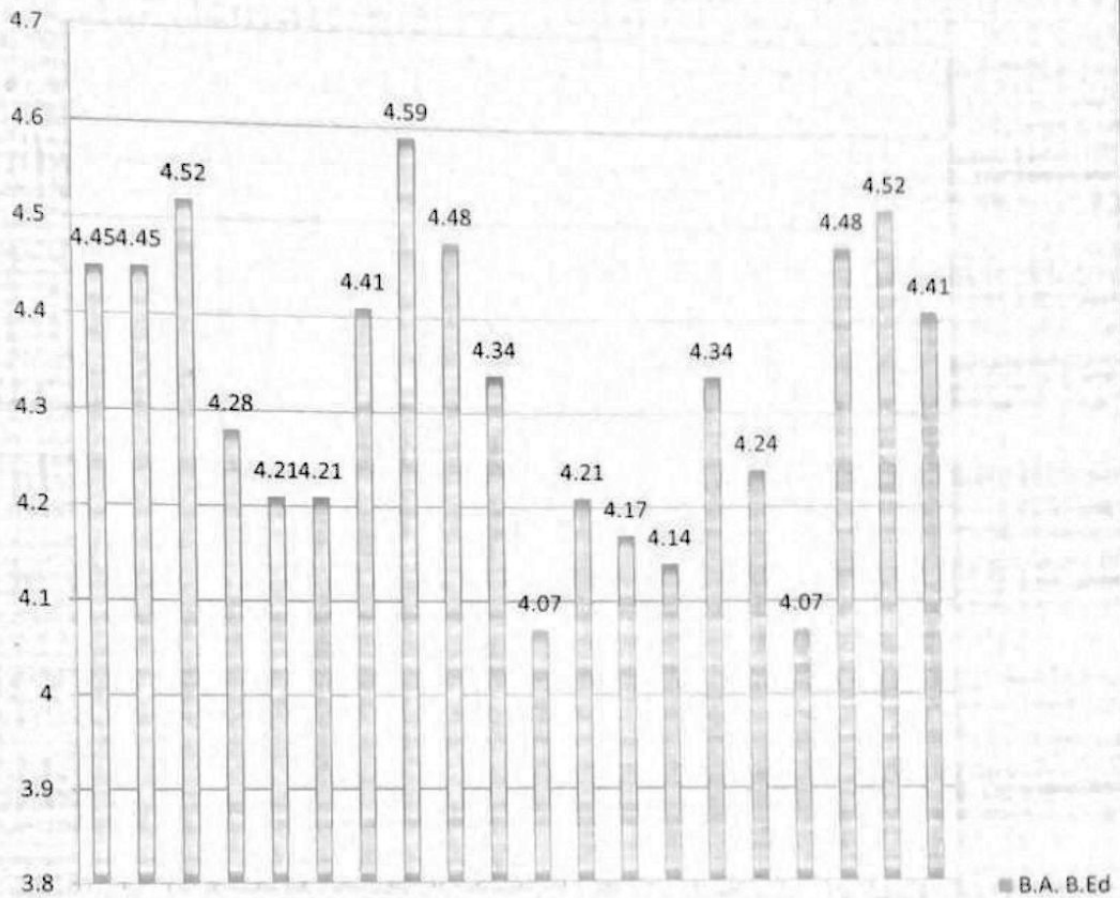


Parameters

[Signature]
Principal

BA.B.Ed
Feedback
Analysis
(2020-21)

Responses
(Rating
Scale from
1 to 5)



- The students possess strong technical knowledge/skill.
- How well did the teachers prepare for the classes?
- How well were the teachers able to communicate?
- The teacher's approach to teaching can best be described as
- Fairness of the internal evaluation process by the teachers
- Was your performance in assignments discussed with you?
- The institution facilitates you in cognitive, social and emotional growth.
- Your mentor does a necessary follow-up with an assigned task to you
- The teachers identify your strengths and encourage you with providing right level of challenges.
- Teachers are able to identify your weaknesses and help you to overcome them.
- The institute/ teachers use student centric methods, such as experiential learning, participative learning and problem-solving methodologies
- Efforts are made by the institute/ teachers to inculcate soft skills, life skills and employability skills to make you ready for the world of work.
- Teachers encourage you to participate in extracurricular activities.
- Teachers use ICT tools such as LCD projector, Multimedia, etc. while teaching?
- What percentage of teachers use ICT tools such as LCD projector, Multimedia, etc. while teaching?
- The overall quality of teaching-learning process in your institute is very good

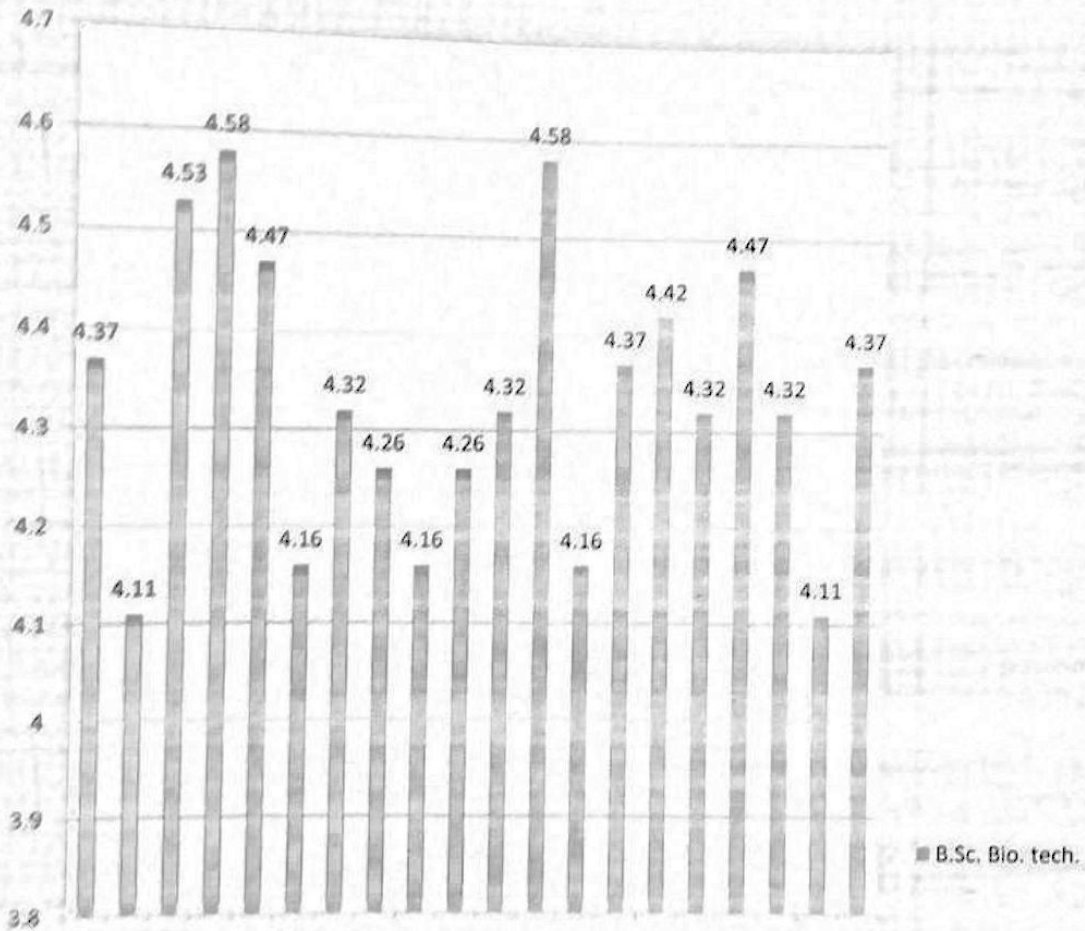
Parameters

Signature



B.Sc. Bio-Tech
Feedback
Analysis
(2020-21)

Responses
(Rating
Scale from
1 to 5)



The teachers demonstrate technical knowledge well.
How well will you use the teachers' skills for the classroom?
The teacher's approach to teaching can well be described as
The number of the internal assessment programs by the teachers
How the performance in assignments submitted with you?
The evaluation process is objective, logical and emotional growth.
The institution provides multiple opportunities for students
Your teacher does a necessary follow-up with an assigned task to you.
The teachers illustrate the concepts through examples and applications.
Teachers are able to identify your weaknesses and help you to overcome them.
The overall quality of teaching-learning process in your institute is very good.
The overall quality of teaching-learning process in your institute is very good.
The overall quality of teaching-learning process in your institute is very good.
The overall quality of teaching-learning process in your institute is very good.
The overall quality of teaching-learning process in your institute is very good.
The overall quality of teaching-learning process in your institute is very good.
The overall quality of teaching-learning process in your institute is very good.
The overall quality of teaching-learning process in your institute is very good.
The overall quality of teaching-learning process in your institute is very good.
The overall quality of teaching-learning process in your institute is very good.
The overall quality of teaching-learning process in your institute is very good.

Parameters

